



Installing the model 4000 serial to USB driver
for use with
Vitalograph Reports

TABLE OF CONTENTS

TABLE OF CONTENTS	2
1 CONNECTING THE MODEL 4000 DEVICE TO A PC	3
2 AUTOMATIC INSTALLATION.....	3
3 MANUAL INSTALLATION.....	5
4 IMPORTANT NOTE:	7

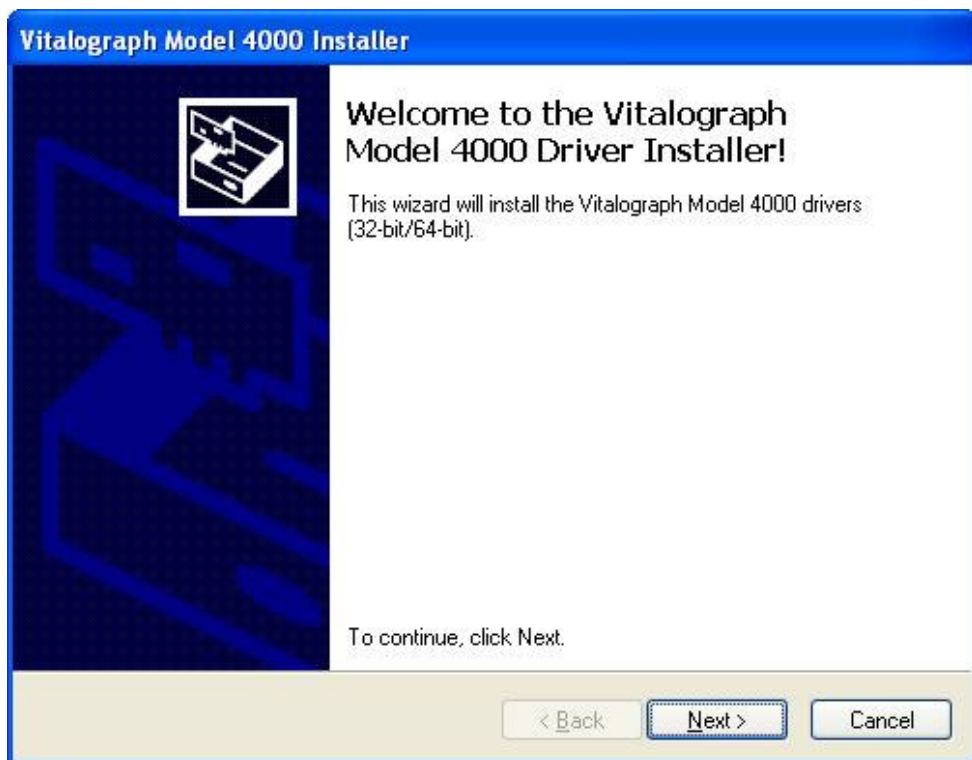
1 CONNECTING THE MODEL 4000 DEVICE TO A PC

Connect the USB cable (supplied with the model 4000) into an available USB slot on the PC. Then connect the other end of the cable into the model 4000 device, which should already be switched on. Once connected the PC will recognise that new hardware has been connected.

2 AUTOMATIC INSTALLATION

Automatic installation of the model 4000 drivers occurs as part of the installation of Vitalograph Reports.

When prompted to do so, choose the option “Next”, as per the dialog below.



At this dialog click “Finish”, as per the dialog below. The drivers have now been saved to the PC.

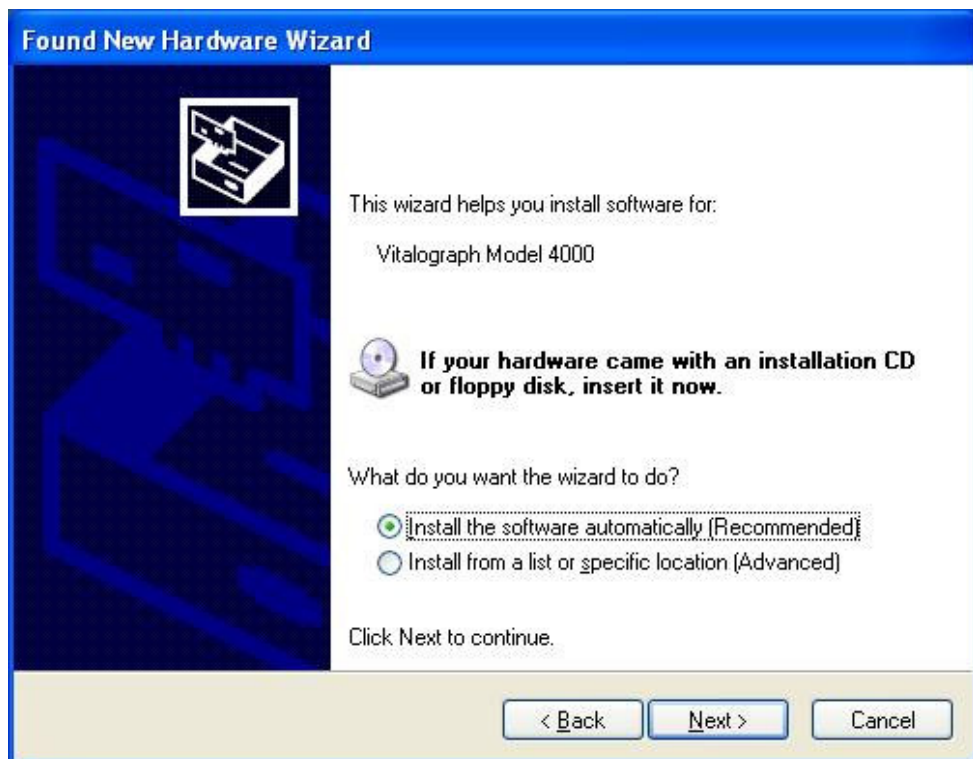


3 MANUAL INSTALLATION

If the model 4000 device has not been connected and powered-up until this point, a manual installation must be performed. A windows update is not required. In the dialog windows displayed below, click the radio button beside “No, not at this time” and then click the “Next” button.



When prompted to do so, choose the option to install the driver automatically, as per the dialog below. Click the “Next” button.



When the driver has been successfully installed, a dialog will be displayed to indicate this and you will be prompted to finish the installation. Click "Finish". The model 4000 device is now ready to use with the Vitalograph Reports.



4 IMPORTANT NOTE:

When using the model 4000 device with Vitalograph reports, to ensure a proper connection with the PC it is always advisable to turn on the model 4000 device and the PC, before connecting the USB cable to the device.

If you loose connection with the model 4000 device for any reason:

1. Make sure the USB cable is securely connected to the PC.
2. Switch off the model 4000 device.
3. Plug out the USB cable from the device.
4. Switch back on the model 4000 device
5. Plug the cable back into the model 4000 device