



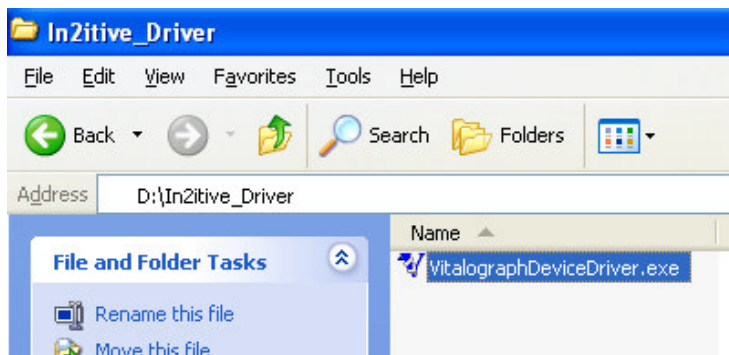
Installing the In2itive USB Driver  
for use with  
Vitalograph Reports

## TABLE OF CONTENTS

<b>TABLE OF CONTENTS .....</b>	<b>2</b>
<b>1   INSTALLING THE VITALOGRAPH IN2ITIVE DEVICE DRIVER.....</b>	<b>3</b>
<b>2   IN2ITIVE DEVICE DRIVER INSTALL WIZARD .....</b>	<b>4</b>
<b>2.1   Installing Drivers.....</b>	<b>5</b>
<b>2.2   Installation Complete.....</b>	<b>5</b>
<b>3   IMPORTANT NOTE: .....</b>	<b>6</b>

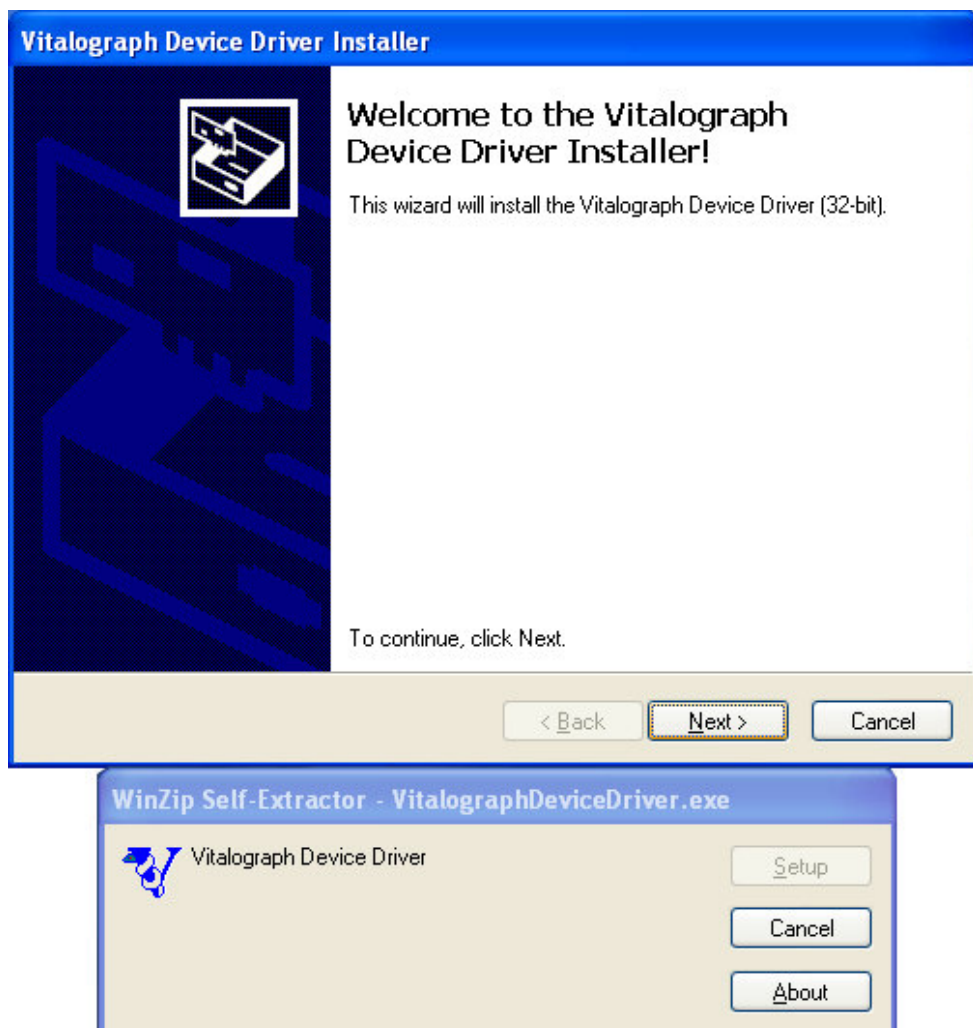
## 1 INSTALLING THE VITALOGRAPH IN2ITIVE DEVICE DRIVER

The Vitalograph In2itive device driver is installed as part of the Vitalograph Reports installation. If however complications occur, this driver can be installed manually by browsing through the installation CD to the In2itive\_Driver folder as per the dialog below.



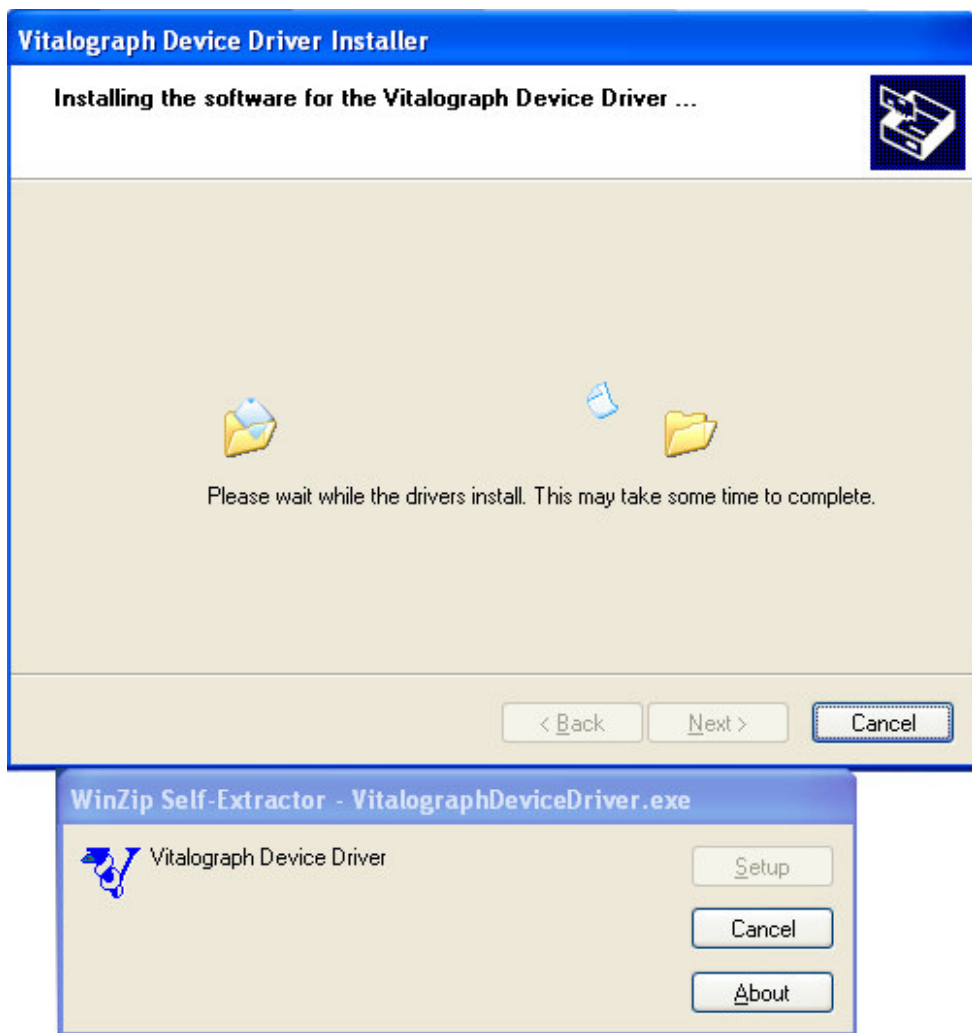
## 2 IN2ITIVE DEVICE DRIVER INSTALL WIZARD

The first screen of the install wizard is the Welcome screen. Click the “Next” button on this screen.



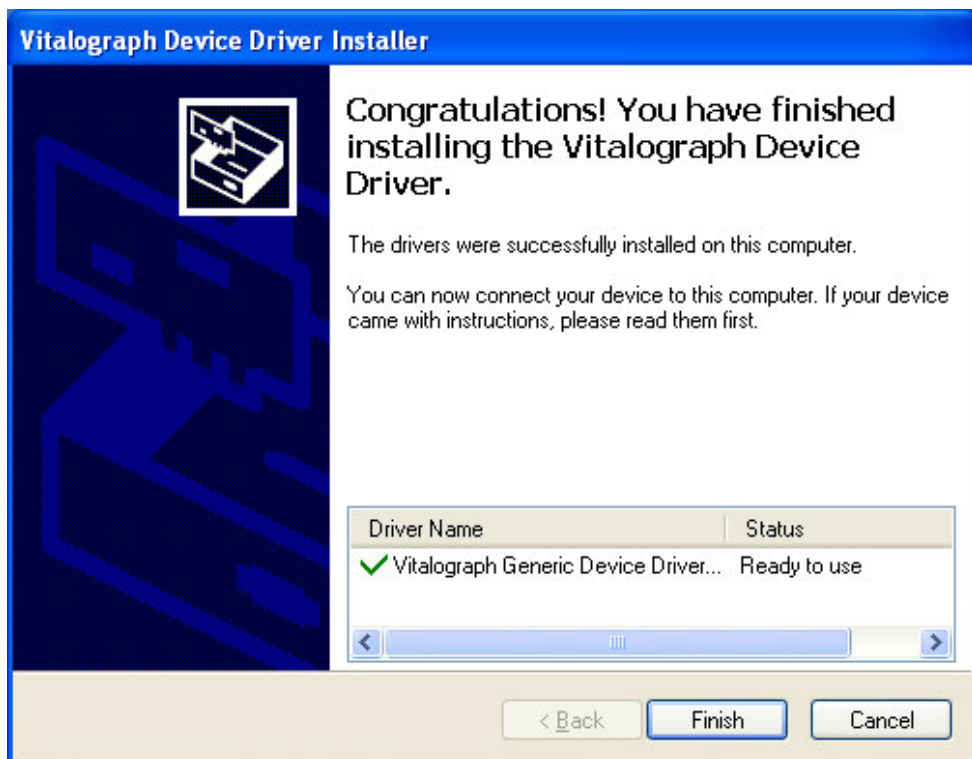
## 2.1 Installing Drivers

Next the driver files will be installed. It may take a few minutes for the driver files to complete installation.



## 2.2 Installation Complete

When the driver has been successfully installed, a dialog will be displayed to indicate this. Click "Finish" on this screen. The In2itive device is now ready to use with the Vitalograph Reports.



### 3 IMPORTANT NOTE:

When using the In2itive device with Vitalograph reports, to ensure a proper connection with the PC it is always advisable to turn on the In2itive device and the PC, before connecting the USB cable to the device.

If you loose connection with the In2itive device for any reason:

1. Make sure the USB cable is securely connected to the PC.
2. Switch off the In2itive device.
3. Plug out the USB cable from the device.
4. Switch back on the In2itive device
5. Plug the cable back into the In2itive device